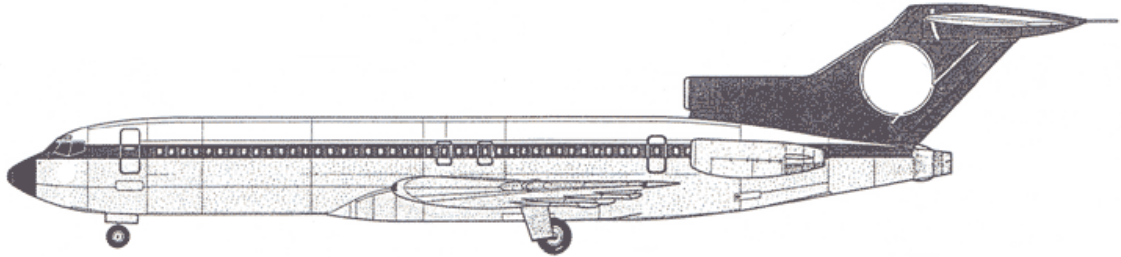


Legendary 727



Flight and Training Manual Part III – TRAINING MANUAL

FOR FLIGHT SIMULATION USE ONLY





FIXED BASE SIM

LESSON 1

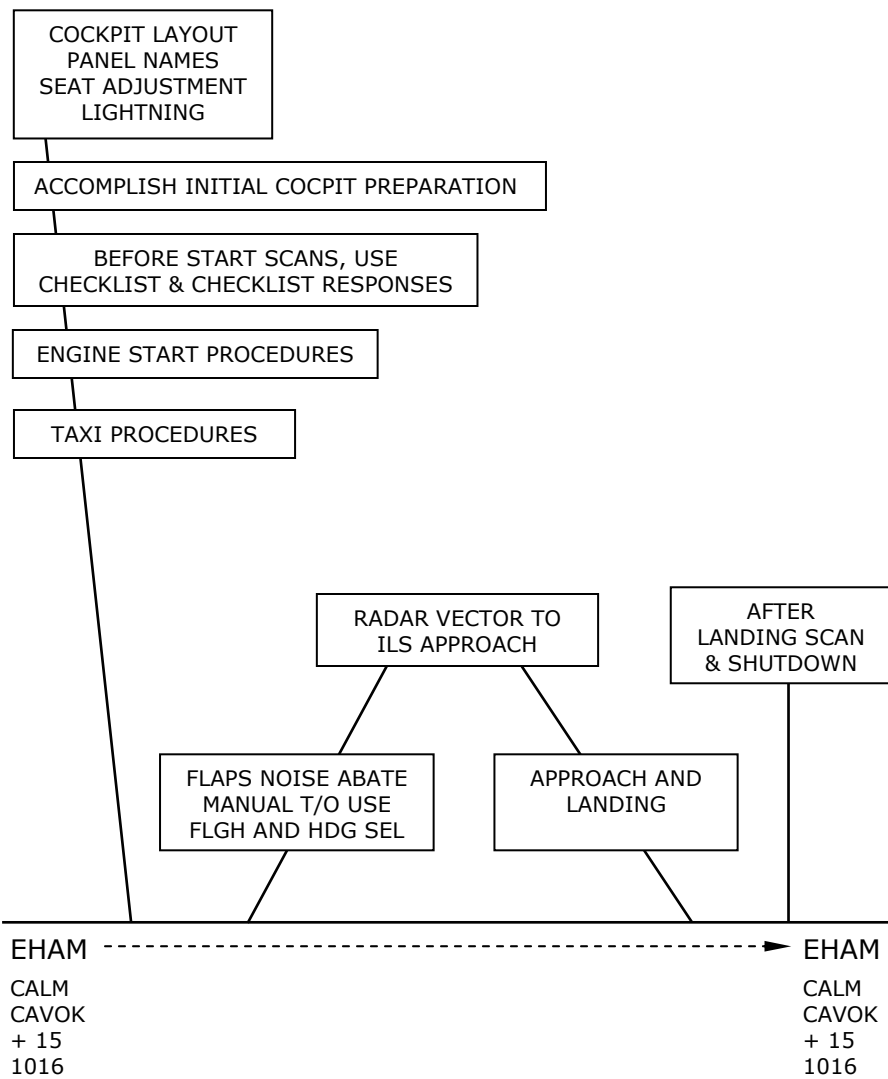
POS INIT

PERF INIT

DEPARTURE A/F	EHAM	WT	140,000.0
GATE	N/A	FUEL	30,000.0
CO-ORDS	N/A	ZFW	110,000.0
RTE	LOCAL AREA (INST ASSIST)	RSV	5.0
		CI	51
COMPANY ROUTE	N/A	CRZ ALT	5000
RWY	24	CRZ WIND	N/A
DEPARTURE	LEKKO	ISA DEV	N/A
ARRIVAL	RWY 19R	CG	SEE SIM "A/C STATUS"
		FLAPS	15

PREFLIGHT

LESSON PROFILE



FIXED BASE SIM

LESSON 2

POS INIT

PERF INIT

DEPARTURE A/F	EHAM	WT	140,000.0
GATE	N/A	FUEL	30,000.0
CO-ORDS	N/A	ZFW	110,000.0
RTE	SPL, 104/11, PAM 114/17, SPY	RSV	5.0
		CI	51
COMPANY ROUTE	N/A	CRZ ALT	FL 100
RWY	24	CRZ WIND	N/A
DEPARTURE	AS ROUTE	ISA DEV	N/A
ARRIVAL	SPY RWY 19R	CG	SEE SIM "A/C STATUS"
		FLAPS	15

LESSON PROFILE

PREFLIGHT:
NORMAL
PROCEDURES

FL CH & V/S
A/P DISCONNECT
BANK LIMIT SEL.
IAS/MACH SEL

USE OF HIS
CONTROL PANEL
SWITCHES

PREPARE FOR
APPROACH

VARY SPEED IN CLIMB
USE OF HDG SEL, HDG
HOLD & LNAV

VARY SPEED
DURING DESCENT

ENGAGE AUTOPILOT

ILS TO RWY 19R
FOR LAND

FLAPS NOISE ABATE
MANUAL T/O
FULL AFDS

AFTER LDG
NORMAL
PROCEDURES

EHAM

EHAM

CALM
CAVOK
+ 15
1016

CALM
CAVOK
+ 15
1016

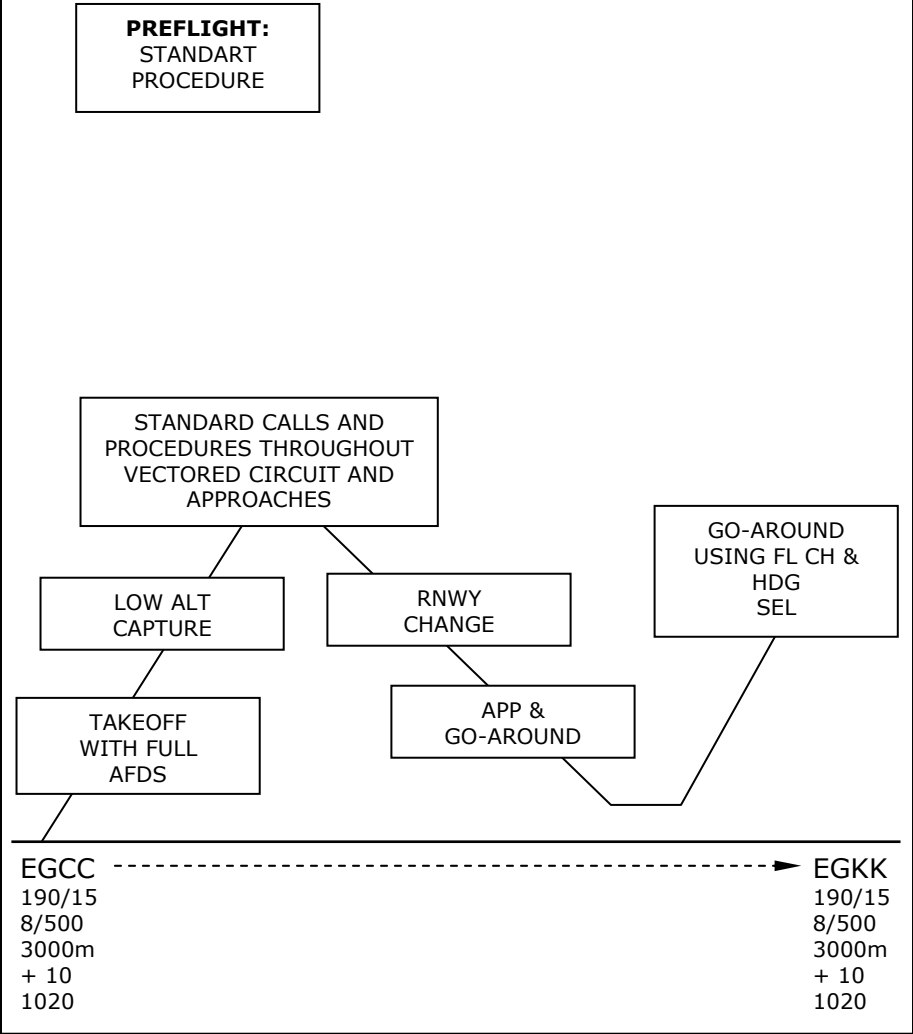
FIXED BASE SIM
 LESSON 3 SORTIE 1

POS INIT

PERF INIT

DEPARTURE A/F	EGCC (MAU)	WT	140,000.0
GATE	N/A	FUEL	30,000.0
CO-ORDS	N/A	ZFW	110,000.0
RTE 1	ORIGIN: EGCC DEST: EGCC 26L	RSV	6.0
		CI	51
		CRZ ALT	3000
RWY	24	CRZ WIND	175/15
DEPARTURE	ATC CONGA SID.	ISA DEV	- 4
ARRIVAL	HON WIB (WILLOW IB) TO: R104 26L	CG	SEE SIM "A/C STATUS"
		FLAPS	15

LESSON PROFILE



FIXED BASE SIM

LESSON 3 SORTIE 2

POS INIT

PERF INIT

DEPARTURE A/F	EHAM	WT	140,000.0
GATE	N/A	FUEL	30,000.0
CO-ORDS	N/A	ZFW	110,000.0
RTE 1	ORIGIN: EHAM DEST: EHAM	RSV	6.0
		CI	51
		CRZ ALT	3000
RWY	19R	CRZ WIND	170/15
DEPARTURE	ATC	ISA DEV	- 10
ARRIVAL	ATC	CG	SEE SIM "A/C STATUS"
		FLAPS	15

LESSON PROFILE

IRS
FAST ALIGNMENT
ALIGN LTS. FLASH

STANDART TURN
ROUND

STANDARD CALLS AND
PROCEDURES THROUGHOUT
VECTORED CIRCUIT AND
APPROACHES

LOW ALT
CAPTURE

ENGAGEMENT &
DIS- ENGAGEMENT
OF VARIOUS AFDS
MODES

G/AS USING FL CH
AND LNAV

TAKEOFF

LAND

REJECTED T/O

EHAM
CALM
1000m
8/300
+ 10
1016

CALM
1000m
8/300
+ 10
1016

FIXED BASE SIM

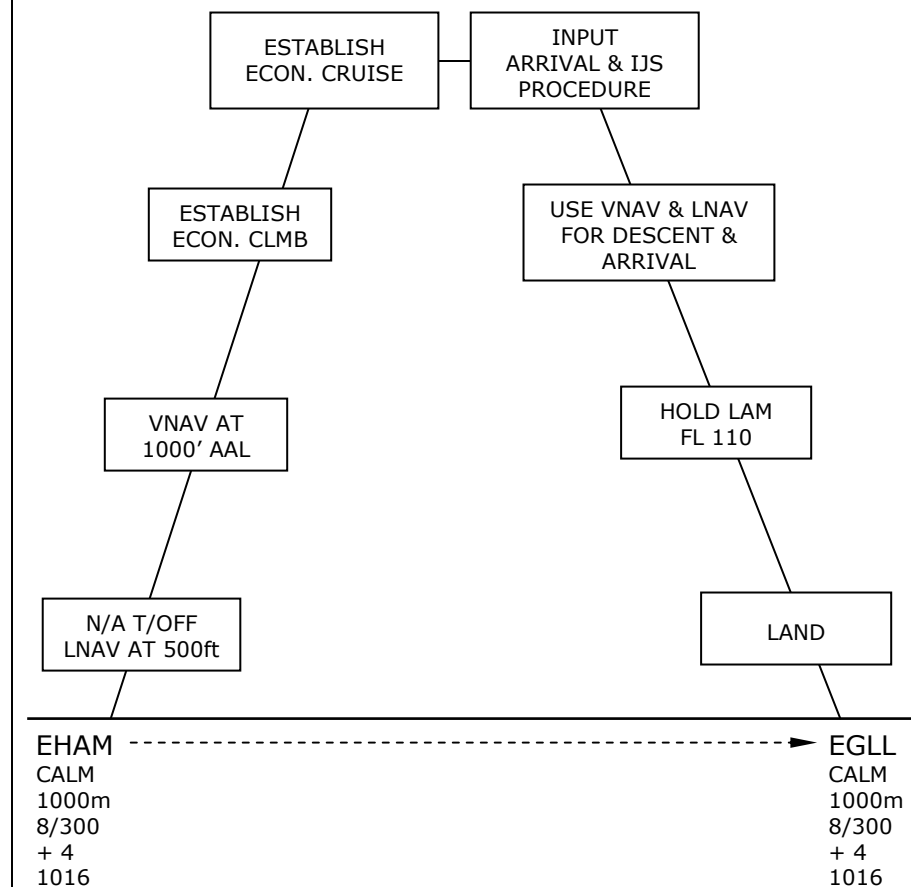
LESSON 4 SORTIE 1

POS INIT

PERF INIT

DEPARTURE A/F	EHAM	WT	161,000.0
GATE	N/A	FUEL	51,000.0
CO-ORDS	N/A	ZFW	110,000.0
RTE 1	ORIGIN: EHAM DEST: EGLL AS FLT PLAN SUPPLIED	RSV	6.0
		CI	51
		CRZ ALT	FL 240
RWY	24	CRZ WIND	270/15
DEPARTURE	ATC	ISA DEV	- 10
ARRIVAL	ACCORDING TO ATC FOR RWY 27R	CG	SEE SIM "A/C STATUS"
		FLAPS	15

LESSON PROFILE



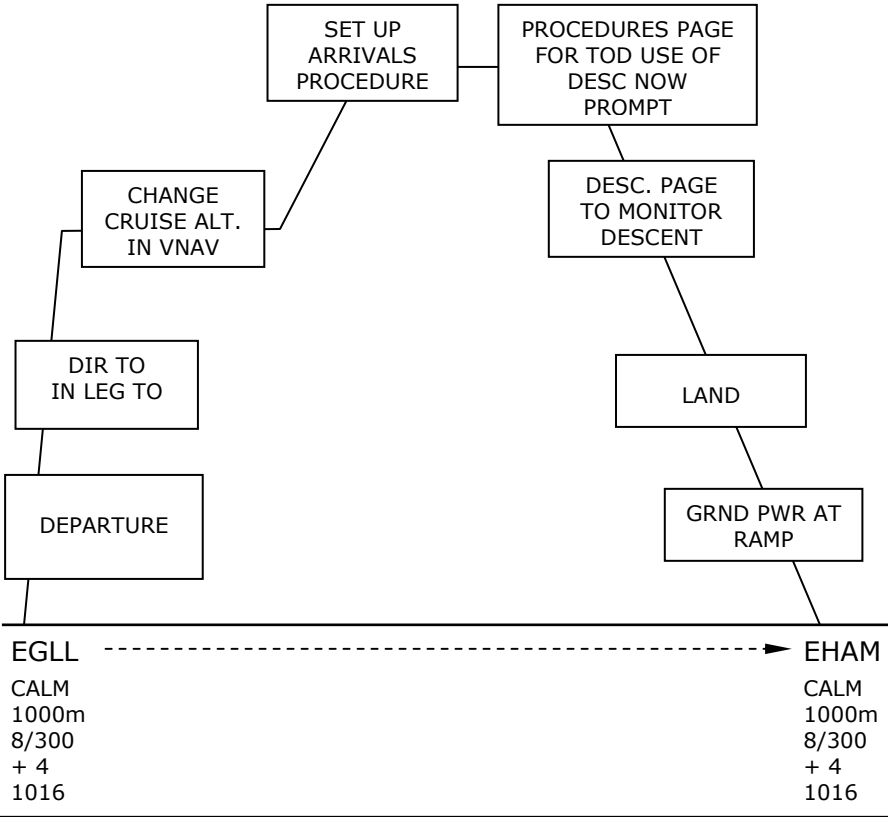
FIXED BASE SIM
 LESSON 4 SORTIE 2

POS INIT

PERF INIT

DEPARTURE A/F	EGLL	WT	161,000.0
GATE	N/A	FUEL	51,000.0
CO-ORDS	N/A	ZFW	110,000.0
RTE 1	ORIGIN: EGLL DEST: EHAM AS FLIGHT PLAN SUPPLIED	RSV	6.0
		CI	51
		CRZ ALT	FL 230
RWY	27R	CRZ WIND	270/15
DEPARTURE	ATC	ISA DEV	- 10
ARRIVAL	AS PER ATC FOR RWY 27R	CG	SEE SIM
		FLAPS	15

LESSON PROFILE



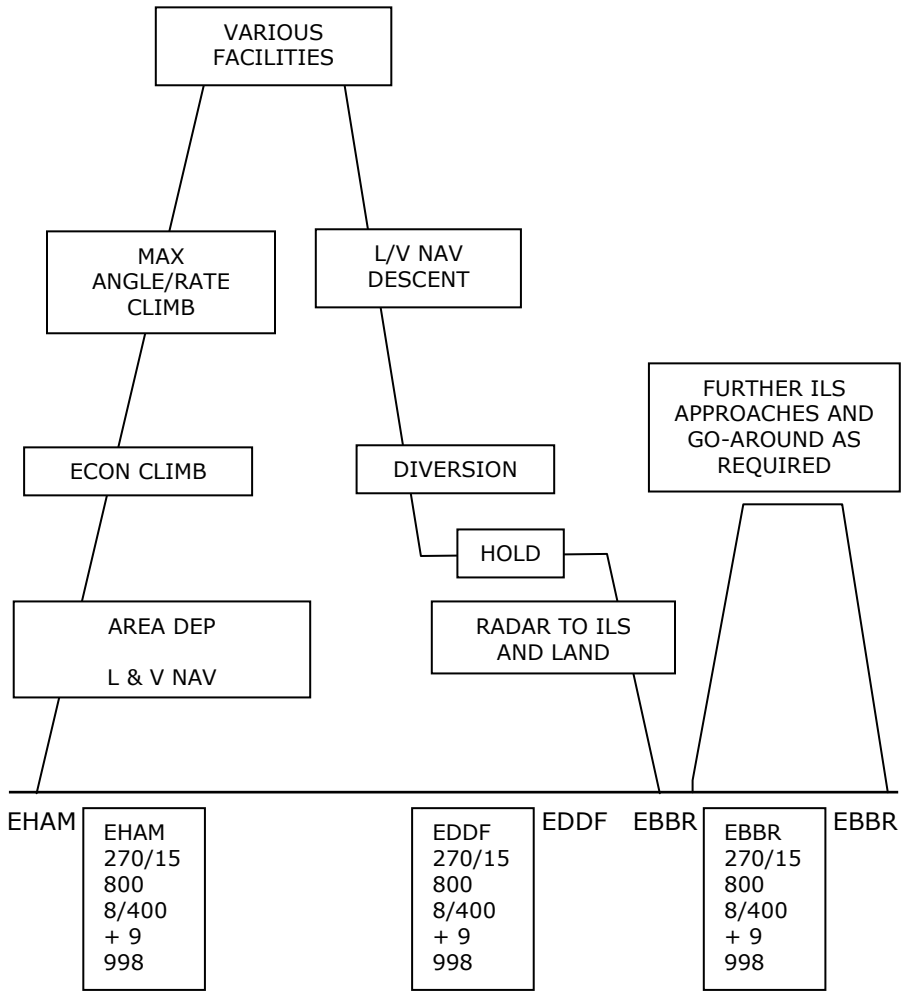
FIXED BASE SIM
 LESSON 5

POS INIT

PERF INIT

DEPARTURE A/F	EHAM	WT	161,000.0
GATE	N/A	FUEL	51,000.0
CO-ORDS	N/A	ZFW	110,000.0
RTE 1	EHAM - EDDF	RSV	5.0
		CI	51
COMPANY ROUTE	SEE COMPANY FLT PLANE	CRZ ALT	330
RWY	24	CRZ WIND	310/95
DEPARTURE	NYKER	ISA DEV	- 5
ARRIVAL	EXPECT RADAR FOR 25R EBBR	CG	SEE SIM "A/C STATUS"
		FLAPS	15

LESSON PROFILE



FIXED BASE SIM

LESSON 6

POS INIT

PERF INIT

DEPARTURE A/F	EHAM	WT	161,000.0
GATE	RAMP	FUEL	51,000.0
RTE	ORIGIN: EHAM DEST: EDDF	ZFW	110,000.0
VIA	B1 – SIGEN 1A	RSV	3.8
RWY	01L	CI	51
DEPARTURE	PAMPUS	CRZ ALT	FL 250
WX	050/10 2000m 8/005 + 2 1006	CRZ WIND ISA DEV CG FLAPS TMSP	240/50 + 5 22 % 15 CLB 1/50°C

LESSON PROFILE

